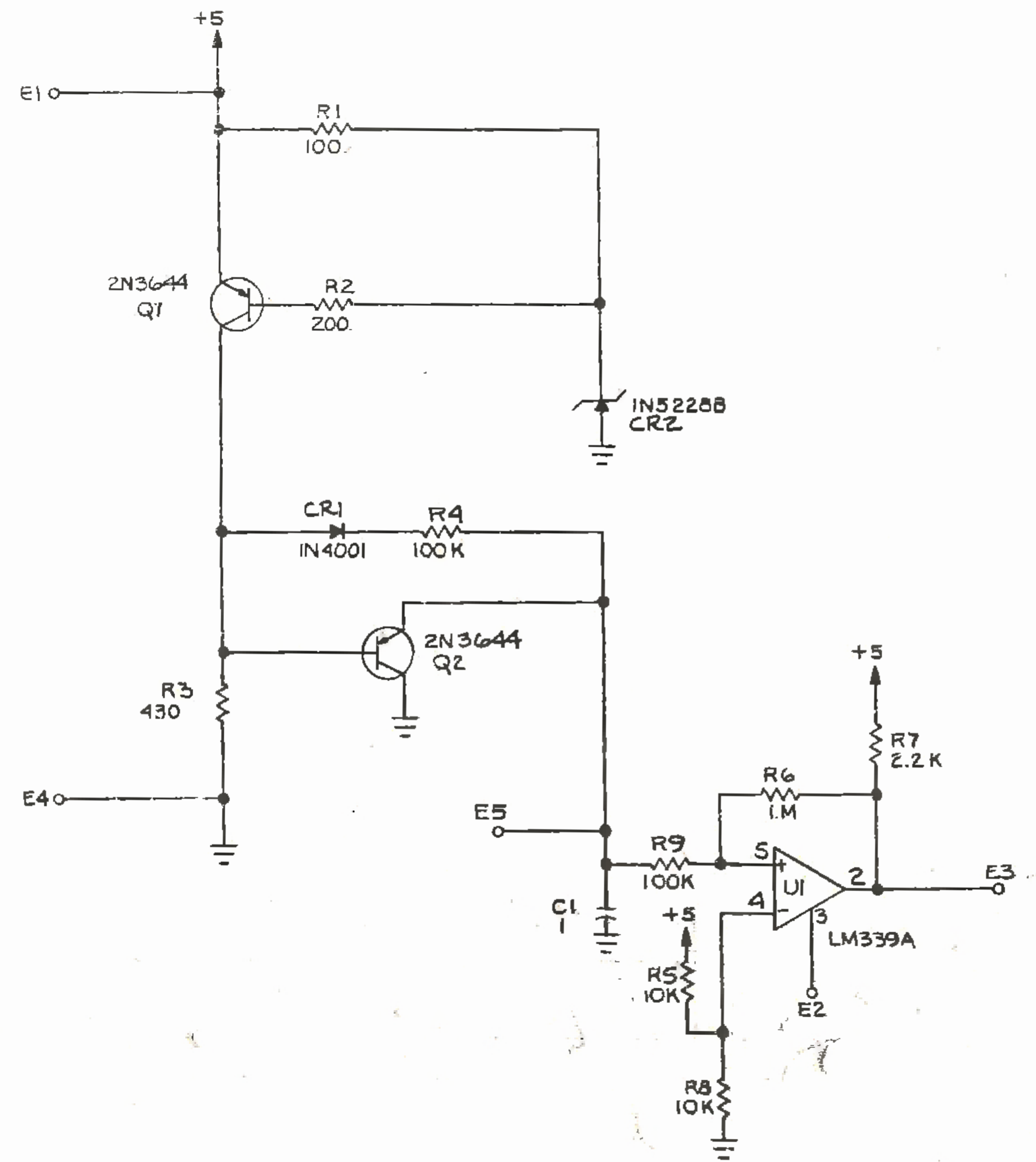


THIS DRAWING CONTAINS INFORMATION WHICH IS THE PROPRIETARY PROPERTY OF INTEL CORPORATION. THIS DRAWING IS RECEIVED IN CONFIDENCE AND ITS CONTENTS MUST NOT BE DISCLOSED WITHOUT THE PRIOR WRITTEN CONSENT OF INTEL CORPORATION.

POWER & GROUND LOCATOR CHART				REVISIONS								
REF DESIG	DEVICE TYPE	GROUND	POWER	FRS	REV	DESCRIPTION	DFT	DATE	CHK	DATE	APVD	DATE
U1	LM339A	12	+5V	+12V	A	ECO 14-1322	P DAVINA	8/21/82	[Signature]	8/18/82	[Signature]	11 Jan



2 ALL CAPACITOR VALUES ARE IN MICROFARADS, +80%, -20%, 50V.  
 1. ALL RESISTOR VALUES ARE IN OHMS, 1/4W, 5%.

NOTES: UNLESS OTHERWISE SPECIFIED

ITEM NO.	DESCRIPTION	QTY	TYPE	REF DES	QTY	LAST USED	NOT USED
Q2							
E5							
CR2							
C1							
R9							
U1							
163895-001	LM339A/J	3					
ASSEMBLIES USING THIS SCHEMATIC			PART GATES			REF DESIGNATOR	

QUANTITY PER DASH NO.		SIGNATURE		DATE		DESCRIPTION	
UNLESS OTHERWISE SPECIFIED:		DRN BY P DAVINA		8/18/82		SCHAEMATIC, RESET MODULE	
1. DIMENSIONS ARE IN INCHES.		CHK BY [Signature]		8/18/82		INTEL	
2. BREAK ALL SHARP EDGES.		ENGR APVD M. J. [Signature]		8/18/82		3065 BOWERS AVE SANTA CLARA CALIF. 95051	
3. DO NOT SCALE DRAWING.		APVD				SCALE	
4. TOLERANCES:		APVD				D 14 0100 163866 A	
XX ±						SHEET 1 OF 1	
XXX ±						100000	